

Save Edition !

Resources and garbage separation guide

Introduction.....	1
Paper.....	2
Cans.....	3
PET bottles.....	4
Glass bottles	5
Plastic.....	6
Burnable garbage.....	7
Non-burnable garbage.....	8
Dangerous garbage.....	9
Bulky Large-size garbage.....	10
Specific home electrical appliances.....	11
Garbage that cannot be disposed off in town.....	12
Businesses approved by the town	13
Location of recyclable waste	15
Encyclopedia of resource and garbage separation..	17

If you separate it, it's a resource;
if you mix it, it's trash.
Thank you for your



Please separate your garbage properly by type and take it out to the designated "garbage collection point" in your area by 8:30 a.m. on the designated day of the week.

For collection dates, please check the "Ono town Separated Collection Schedule" table.

Garbage will be collected as usual on public holidays.

For collection during the end of the year and New Year holidays, please check the "Ono Town Separated Collection Schedule".

Ono Town “ONOMACHI”

Introduction

Fukushima Prefecture has the second-worst amount of garbage produced per person per day in the nation (2nd worst). (Results of 2020)

Fukushima Prefecture: 1,033 grams per person.

Ono Town: 837grams per person.

Ono Town is ranked 43rd for the less amount of waste it produces in Fukushima Prefecture.

By reducing waste and recycling it as resources, we can reduce the amount of carbon dioxide (CO₂), which causes global warming, and reduce the amount of landfill waste (final disposal). Let's separate our garbage and create a recycling-oriented society where we can reuse our limited resources.

Request for proper management of garbage collection sites

●Request for separating garbage

Please separate garbage correctly and take it out to the designated collection point on the designated day.

Please tie each bag tightly.

※ We collect waste using different collection vehicles for each type of garbage.

●Punctuality

Please put your garbage in designated bags and take it to the collection point by 8:30am on the designated day.

※ Collection is done in order from 8:30 a.m.

●Thorough management

The garbage collection place will be managed by everyone who uses it.

Please keep the facility clean by deciding who will clean it in turns.

Items with violation stickers must be taken back by the person who put them out, and they should be disposed of correctly according to the proper rules.

For inquiries regarding resources and garbage Inquiries regarding resources and waste

Ono Town Hall, Citizen Life Department
TEL 0247-72-6933

Paper Products

You can recycle newspapers, advertisements, magazines, cardboard, paper packs, books, and empty snacks boxes. Please tie each type of item crosswise with string or place them in a cardboard box or paper bags, seal them, and put them out for collection.

※If you put items in a cardboard box, etc., please write the type of items (newspapers, magazines, etc.) in a visible place on the outside.

Please dispose off the following items separately: [Newspapers], [Books, magazines, and other paper], [Cardboard], and [Paper cartons].

●Newspaper

Please tie newspapers and flyers (including advertising flyers) in a crosswise with string, or put them in a box.

Newspapers and advertising flyers



●Books, magazines and other paper

Please bundle books and magazines crosswise with string. Flatten snack boxes and similar items, then either tie them crosswise with string or place them in a box for disposal.

Books, magazines and other paper



●Cardboard

The item with a wavy cross-section is called cardboard. Please bundle them crosswise with string or place them in a box for disposal.

Cardboard



●Paper pack

Please rinse it lightly, cut it open, and either tie it with string or place it in a box for disposal.

※ Except for those with silver inside

Paper pack



●Other types of paper

Paper boxes for snacks and food, wrapping paper, tissue paper boxes, envelopes (without glue or unopened), memo paper, calendars, chopstick holders, toilet paper rolls, plastic wrap rolls, etc.

●Paper that cannot be recycled

Carbon paper, thermal paper such as receipts, gold and silver paper, pressure-sealed postcards, vinyl-coated paper, photographs, sticker paper, scented paper, paper cups, tissue paper, waterproof paper (such as yogurt containers), paper with aluminum foil on the inside, instant noodle lids, paper that is stained with oil or mud, waxed cardboard, and envelopes (opened or glue), etc. cannot be recycled and should be put out as [burnable Garbage].



Receipts



tissue paper



paper cups



envelopes(opened or glue)



photos



yogurt

Cans

Steel and aluminum cans of beverages such as juice, beer, tea, coffee, cocktail, etc. Please rinse the cans lightly before disposing of them.

Please dispose of the cap as non-burnable garbage. In addition, cans of fruit, fish, and meat can also be considered non-burnable garbage.

● Aluminum cans and steel cans

Please remove the cap and dispose of it as non-burnable garbage.

Aluminum and steel cans can be placed in the same bag.

Cans of fruits, fish, meat, etc. are classified as [non-burnable garbage].



Aluminum cans and steel cans

<Recycle mark>

Only cans with the following recycling marks can be disposed of as cans.



Don't put cigarette butts or other trash in the can! It won't be recyclable!



● Can of canned food

Please dispose of canned food cans as non-burnable garbage.



PET bottles

PET bottles for juice, tea, mineral water, soy sauce, mirin, etc.
Please rinse the bottles lightly with water before disposing of them. Separate them from other plastics and dispose of only the plastic bottles.

●PET bottles

Remove the caps and labels and dispose of them as **plastic** (if they are paper, dispose of them as **burnable waste**). ※Only items that can be removed by hand are acceptable.



PET bottles

<Recycle mark>

Only plastic bottles with the following recycle marks can be recycled.



※Please separate **PET bottles** from other plastics and put them in the designated bags.

●Plastic bottle of oil and Dirty plastic bottle

Plastic bottles of oil and oily dressings cannot be recycled, so please dispose of them as burnable garbage.



If there are caps or labels still attached or any contents remaining in the bottle, it cannot be recycled, so please help us by removing them.



Glass bottles

Bottles for alcohol, juice, beer, seasonings, etc.

Rinse the bottles lightly with water and then separate them into clear (colorless transparent) bottles, brown bottles, and other colored bottles.

● Clear bottles, brown bottles, and bottles of other colors

Please dispose of clear bottles, brown bottles, and bottles of other colors in separate designated bags.



Clear bottles



Brown bottles



Bottles of other colors

● Caps, lids, corks, etc.

Please remove caps, lids, corks, etc.

Metal items should be put into the "non-burnable garbage" category, plastic into the "plastic" category, and corks and other items into the "burnable garbage" category.



Caps, corks, etc.

● Bottles for oil and dressing, and bottles that cannot be cleaned.

Please dispose of it as non-burnable garbage.



Bottles for oil and bottles that cannot be cleaned

● If the bottle breaks

To prevent any danger, please wrap it in newspaper etc. and dispose of it as non-burnable garbage.



Plastic

Plastic containers and packaging that become unnecessary once the product contents have been removed or eaten.

Instant noodle containers, candy bags, egg cartons, side dish trays, cups, plastic bottle labels and caps, films, plastic wrap, Styrofoam, fruit nets, etc. If there is food residue or other dirt remaining on the cups or trays, rinse them lightly before disposal.

●Plastic

If the item is very dirty or oily, please dispose off it as "burnable garbage" Also, please put out the garbage in **a separate bag from plastic bottles.**

<Recycle mark>

Items that can be disposed of as plastic have the following markings:



Trays for side dishes etc.



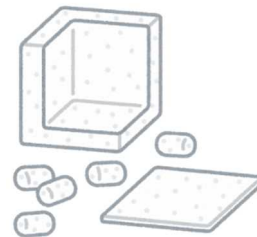
PET bottle caps and labels



Bag of sweets



Egg carton



Styrofoam

●Plastic products such as toys, hangers, plastic containers, buckets, etc.

Items made of plastic that are not packaging or wrapping should be disposed of as **burnable garbage.**



Plastic Toys



Mayonnaise container

Buckets and hangers

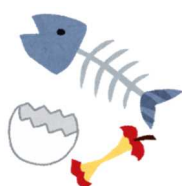
Burnable Garbage

These are items that cannot be recycled and can be burned due to their material properties.

Separate recyclable resources as much as possible to reduce burnable garbage.

● Burnable Garbage

Food waste (kitchen garbage), non-recyclable paper (such as carbon paper and vinyl-coated paper), clothing, shoes, pruned branches, wood chips, and paper diapers, etc.



Food waste



Paper that cannot be recycled



Clothing



Shoes



Wood chips and branches



Disposable diapers



Receipt



Mayonnaise container



Toys



Plastic products

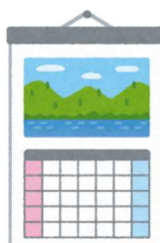
Please drain the water from food waste before disposing of it.

Please flush diaper waste down the toilet. For wooden pieces and pruning branches, please cut them to a length of 60 cm and a thickness of 10 cm or less, bundle them, and place them in a designated bag. If they do not fit in the designated bag, they will be classified as bulky garbage.

● Please cooperate with the separation of resources

Items such as candy boxes, calendars, plastic wrap cores, tissue paper boxes, and wrapping paper can all be recycled.

Please dispose of it as [paper] referring to page 2. Also, when it comes to clothes, use second-hand clothes collection service as much as possible.



Paper



Recycling of used clothing, etc.

Non-burnable garbage

Garbage that cannot be burned due to its material.

Broken glass and sharp knives should be wrapped in paper or other material to prevent injury.

● Non-burnable garbage

Metal or ceramic cookware, tableware, pottery, glassware, iron products, bottle and can caps (metallic), umbrellas, small household appliances, oily or dirty bottles, canned food tins, etc.



tea bowl



Frying pan



kettle



Pottery cup



Clay pot



dryer



Rice cooker



Broken glass



Knives/Blades



canned food

Please wrap knives, broken glass, broken bottles, etc. in newspaper to prevent danger. Small household appliances such as hair dryers and rice cookers can only be disposed off if they fit into the designated bag for "non-burnable garbage."

● Dangerous garbage

Batteries, lighters, spray cans, fluorescent lights, etc., are classified as [dangerous waste]. Please do not dispose of them together with [non-burnable waste].



● Bottle

Bottles that are not oily or dirty should be disposed off as "Bottles".

If a bottle breaks, wrap it in newspaper or other paper and dispose of it as "non-burnable garbage".



Dangerous garbage

Batteries, such as dry batteries and household appliance batteries, as well as waste that poses a risk of explosion and mercury (such as thermometers), require careful handling.

● Dangerous garbage

Dry cell batteries, light bulbs, fluorescent lights, mercury thermometers, gas cartridges, spray cans (aerosol cans), lighters, batteries (for home appliances), etc.



dry battery



Spray cans



Button batteries



fluorescent lights



lighter

When separating items, please read the product descriptions carefully and separate them carefully. For home appliances that use batteries and where the batteries cannot be removed, please dispose of them as [dangerous waste].

For household appliances with removable batteries, please dispose of the batteries as 'dangerous waste' and the main body as 'non-burnable waste.'

Fluorescent lights should be placed in the box they were purchased in and disposed off as dangerous waste.

Please make sure to empty spray cans before disposing of them.

※Do not drill any holes as it is dangerous.

● Battery

Video cameras and digital cameras are considered "non-burnable garbage," but batteries are considered "dangerous garbage." Please separate them before disposing of them.



There have been cases of explosions and fires occurring because dangerous waste was not properly separated. Please separate the waste correctly!



● Important notice for disposal!

If dangerous waste is not disposed of properly, it can be dangerous for those using the collection site. To ensure safety, please separate your waste correctly.

Bulky (large-size) garbage

Garbage that does not fit into the special bag is classified as large garbage. Bulky garbage will not be collected at garbage collection points, so it must be taken directly to the Tamura Clean Center.

●Bulky(large) garbage

Bicycles, chests of drawers, chairs, tables, futons, carpets, tatami mats, etc.



Chests of drawers



chair • tables



futons



tatami

●Disposal method

You must bring all your bulky waste by yourself.

The fee is 100 yen (tax included) per 10 kg of waste.

You can also request a "general waste disposal licensed company" designated by the town to take care of it. (An additional fee will be charged.)

Drop off address: Tamura Clean Center
48-29, Hirose Yadaijin, Takine-cho, Tamura City
Telephone: 0247-78-2723
Opening hours: 9:00am - 4:00pm
Opening days: Please see the garbage sorting collection schedule.

●Garbage that cannot be disposed of in town

Pianos and organs, drums, agricultural waste, batteries (other than for home appliances), fire extinguishers, tires, spring beds, construction waste, etc.



Fire extinguisher



Agricultural waste



battery



tire



Construction waste materials

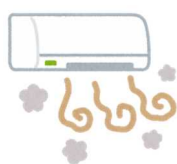
Specific home (electrical) appliances

For the four home appliances: air conditioners, televisions, refrigerators/freezers, and washers/dryers, please choose from the methods below.

● When making a request to a retail store, etc.

If you are replacing a product, please ask the store where you purchased it or a town-designated "general waste disposal licensed company" (additional fees apply).

Recycling and transportation fees vary depending on the product, so please inquire with the retailer or collection and transportation company you request.



air conditioner



TV



Refrigerators and freezers



Washing machine and dryer

● When bringing to Tamura Clean Center

- ① Please purchase a home appliance recycling ticket at your nearest post office.

(The product manufacturer name, model number, etc. are required.)

※ The amount varies depending on the product, so please check at the post office.

- ② Delivered to Tamura Clean Center

Please pay a transportation fee of 1,300 yen (tax included) per unit when you bring the items in.

Tamura Clean Center Address: 48-29 Yadaijin, Hirose, Takine-cho, Tamura City

Phone: 0247-78-2723

Opening hours: 9:00am - 4:00pm

Opening days: Please see the garbage sorting collection schedule.

● When bringing the item to a designated collection point for home appliance recycling

- ① First, please call the Home Appliance Recycling Ticket Center.

(The product manufacturer name, model number, etc. are required.)

Toll free number 210-319640

If you can't connect via IP phone, etc. 03-3903-7551

- ② Please purchase a home appliance recycling ticket at your nearest post office.

- ③ Please take your electrical appliances to the designated area.

The Home Appliance Recycling Ticket Center does not collect home appliances from your home. If you would like your electrical appliances to be collected from your home, please contact Businesses approved by the town. Additional charges apply.

Garbage that can't be disposed of in town

For garbage that is difficult to dispose of at town facilities, please contact the retailer or a town-designated "licensed general waste disposal business."

●Items that are difficult to dispose of

Tires, gas cylinders, metal barrel, agricultural waste such as vinyl, motorcycles, fire extinguishers, roof tiles, safes that do not fit into designated bags, concrete construction waste, machine oils such as engine oil, dehumidifiers containing freon (fluorocarbons), etc.



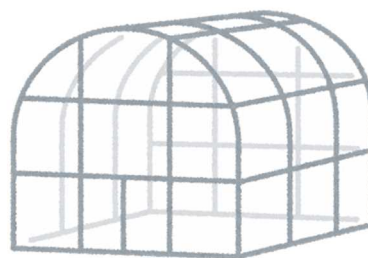
Tire



gas cylinders



metal barrel



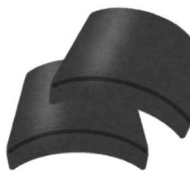
Vinyl and other agricultural waste



motorcycle



fire extinguisher



roof tile



safe



Concrete waste



Stone etc.



Engine oil



Freon dehumidifier.

※Dehumidifiers containing freon can be placed in a designated bag as 'non-burnable waste' only if the freon has been collected by a freon collection company. If they do not fit in the designated bag, they can be disposed of as bulky waste. In that case, please attach the freon recovery certificate to the dehumidifier.

※These items cannot be collected or brought to the Tamura Clean Center.

They will not be collected if dropped off at the collection center, so be sure to check with the retailer or a town-designated "licensed general waste disposal business."

Businesses approved by the town

●List of approved general waste disposal businesses

(Ono town)

(2025.4.1～2027.3.31)

Business or personal name	Address	Telephone number
Koueki shadanhoujin Onomachi Shiruba Jinzai Center	Onomachi Ononimachi Nakadouri 35	0247-72-2412
Yamauchi shouten	Onomachi Natsui Ukinai 2	0247-72-5670
Kabushikigaisha Ono Seisou-sha	Onomachi Otokami tsuburata100-1	0247-73-2324
Kabushikigaisha Kusano	Onomachi Yatsuzaku Yatsu 76-1	0247-72-2260
Munakata Hiromi	Onomachi Yoshinobe Oohira 1-12	0247-73-2671
Kabushikigaisha Amize	Onomachi Shioniwa Dairoku 18	0247-72-5471
Matsumoto Risaikuru Center	Onomachi Yatsuzaku Ko Jirou 51	0247-72-2056
Iioka Kougyou Kabushikigaisha	Onomachi Ononimachi Dangota 74-1	0247-72-2442
Yuugengaisha Eisei Shori Kougyou	Onomachi Ononimachi Yado no Ato 110	0247-72-4665

(Towns other than Ono town)

Business or personal name	Address	Telephone number
Yuugengaisha Mashiko shouten	Tamura-shi Funehiki-chou Funehiki Maeda 87-1	0247-82-0631
Kabushikigaisha Hokkaikougyou	Tamura-shi Takine-chou Sugaya Nukadzuka mae 49-1	0247-78-3795
Kabushikigaisha Mashiko Recycle Center	Tamura-shi Funehiki-chou Funehiki Hanaki-nai 98-1	0247-82-1283

※For disposal of industrial waste, etc., please contact the relevant company directly.



The items handled and the fees differ by each company. For more details, please contact them directly.

●About unauthorized companies

Do not use "unauthorized" collection companies.

When requesting disposal of household waste, you must request it from an authorized general waste disposal company designated by the town. Unauthorized waste collection companies are companies that do not have a general waste disposal license or are commissioned by the town and collect waste illegally.

(Industrial waste disposal licenses and secondhand goods dealer licenses do not allow collection of household waste.)

If you request collection from these companies, there is a possibility that proper processing will not be conducted, you may be charged high fees later, and it could lead to illegal dumping or environmental pollution.

●About business waste (general business waste)

By law, businesses are required to properly dispose of "business waste" generated by businesses at their own responsibility and expense. Since it cannot be taken to a local waste collection center, please dispose of it properly using one of the following methods.

What is business waste (business general waste)?

Business waste (general business waste) refers to waste generated from business activities, not only from profit-making businesses like stores, companies, offices, and factories, but also from places providing public services, such as hospitals, government offices, and schools. (including paper, packaging materials such as cardboard, empty lunch containers, pruning branches, etc.)

Method of disposal ① the company transports the waste to the processing facility by themselves.

Delivery destination: Tamura Clean Center

Address: Tamura-shi Takine-chou Hirose Yadaijin 48-29

Phone number : 0247-78-2723

Opening time : 9:00am - 4:00pm

Opening days: Please see the garbage sorting collection schedule.

※You will be charged a fee of 100 yen (including tax) per 10 kg.

※**Advance notification to the Tamura City Environmental Division is required.**

Method of disposal ② Please contact a general waste disposal company designated by the town.

Please ask a licensed general waste disposal company (page 13) authorized by the town to dispose of the waste.

※For details on fees etc., please contact the company directly.

Where to bring recyclable resources and garbage

Household waste can be brought directly to the Tamura Clean Center.

When bringing in, please be sure to **separate items by type**.

If you put it in the designated bag provided by Ono Town, there is no charge.

If the items are not in the designated bags provided by Ono Town, the following fees will apply.

Type / Category	Cost / Fee
Paper products	free
Cans, PET bottles, glass bottles, plastics, burnable garbage, non-burnable garbage, hazardous(dangerous) garbage	50 yen per 10 kg
Bulky/Large waste	100 yen per 10 kg



Delivery destination : Tamura Clean Center

Tamura-shi Takine-chou Hirose Yadaijin 48-29

Phone : 0247-78-2723

Opening time : 9:00am - 4:00pm

Opening days: Please see the garbage sorting collection schedule.



You can bring the waste even if it is not in the town-designated bags, but please be sure to sort it by type before bringing it in.

●Types of respieses and garbage seen from garbage bags.

Designated garbage bag	Type/Category.		Resources and garbage that can be put in
<input type="checkbox"/> There are no designated garbage bags.	Resources	Paper	Recyclable paper such as newspapers, advertising flyers, paper cartons, books, empty boxes, etc.
<input checked="" type="checkbox"/> Cans	Resources	Cans	Beverage aluminum cans and steel cans.
<input checked="" type="checkbox"/> Bottles	Resources	Glass bottles	Bottles for alcoholic be cerages, beer, seasonings, etc. Please separate the bottles by color.
<input checked="" type="checkbox"/> Plastics or plastic bottles	Resources	PET bottles	PET bottles for beverages, tea, mineral water, soy sauce, mirin, etc.
	Resources	Plastics	Plastic containers and packaging, sty rofoam, etc
<input checked="" type="checkbox"/> Burnable Garbage	Garbage	Burnable garbage	Items that can't be recycled but can be burned due to their material.
<input checked="" type="checkbox"/> Non-burnable Garbage or dangerous Garbage	Garbage	Non-burnable garbage	Items that can't be recycled but can't be burned due to their material nature.
	Garbage	Dangerous garbage	Prtentially explosive garbage such as dry cell batteries, household equipment batteries, and spray cans.
<input type="checkbox"/> There are no designated Garbage bags.	Garbage	Bulky/Large garbage	Large garbage that dose not fit int each garbage bag.

※If the garbage is in a designated bag, there is no charge.

※If the items are not in the town-designated bags, there is a fee of 50 yen (including tax) per 10 kg. For bulky waste that does not fit in the designated bags, a fee of 100 yen (including tax) per 10 kg is required.

※Garbage bags from other municipalities can't be used.

More information on how to separate garbage can be found on the Ono Town official website.



How to dispose of garbage



Garbage collection schedule

Please be sure to use the designated bags specified by Ono Town.



Reference book of resource and garbage separation

● Resource and garbage separation

- Depending on the item, the classification may differ from this reference book due to differences in materials, etc.
- Please remove any dry cell batteries or batteries contained in electrical appliances and dispose of them as dangerous waste.
- For items not listed, please contact the Ono Town Hall's Citizen Life Division.

Category	Type/Category.	How to dispose / Disposal method
Resources	Paper	Please tie up each type with string or place them in a box etc.
	Cans	Cans-only Bags
	Glass bottles	Bottles-only bag (Please separate by colorless transparent, brown, and other colors).
	PET bottles	Special bags for plastic and PET bottles. Please separate by type and do not mix.
	Plastics	
Burnable	Burnable garbage	Bags for burnable garbage
	Grass and Trees	
Non-burnable	Non-burnable garbage	Bags for non-burnable garbage (also for dangerous garbage) Please separate items by type without mixing them together.
	Dangerous garbage	
Large-sized	Bulky/Large garbage	Bring it directly to the Tamura Clean Center Request a licensed general waste disposal company
Home appliances	Specified home appliances (Products subject to the Home Appliance Recycling Law)	How to dispose of specified home appliances (page 11)
Hard-to-dispose	Garbage that cannot be disposed of in town	Please contact a retailer or specialist company (the town does not collect it).

● Contact Information

Ono Town Hall's Citizen Life Division

Phone 0247-72-6933

FAX 0247-72-3121

Item Name	Type of Garbage	Application
10-liter can	Non-burnable	Empty the contents
A		
A tin of pain	Non-burnable	Use up the contents.
Abacus	Burnable	
Accordion curtain	Oversized	
Acrylic board	Burnable	Items that do not fit in the designated bag are considered oversized garbage
Activated carbon	Burnable	
Adhesive tape	Burnable	
Advertisement	Paper products	Bundle only with newspaper and advertisements using string.
Aerosol can	Hazardous waste	Use up the contents. Do not puncture
Agricultural machinery	Difficult to process	Cannot be processed by Ono town. Please take it to a specialized waste disposal facility.
Agricultural vinyl	Difficult to process	Cannot be processed by Ono town. Please take it to a specialized waste disposal facility.
Air pump (metal)	Non-burnable	
Air pump (Plastic)	Burnable	Remove the metal parts and place them in Non-burnable garbage
Air purifier	Non-burnable	If it cannot fit in the designated bag, it will be classified as oversized garbage.
Air refresher	Burnable	
Air-condition	Specified kinds of home appliances	Specified kinds of home appliances (Page 11)
Alarm clock	Non-burnable	Remove the batteries and place them in hazardous waste
Album	Burnable	
Aluminum foil	Burnable	
Aluminum foil stove guard	Burnable	
Aluminum pan	Non-burnable	
Aluminum pan (Simple aluminum pan)	Burnable	
Amplifier (for musical instruments)	Oversized	
Antenna	Oversized	
Antenna cable	Non-burnable	
Apron	Burnable	
Aquarium	Oversized	
Artificial flowers	Burnable	Remove the battery and dispose of it as hazardous waste.
Ash	Burnable	
Ash tray	Non-burnable	Cigarette butts should be disposed of in the burnable garbage.
Audio rack	Oversized	
Axe	Non-burnable	Wrap the blade part with paper or cloth
B		
Baby chair	Oversized garbage	
Backpack	Burnable	Remove the metal fittings.
Bag	Burnable	

Item Name	Type of Garbage	Application
Bag (leather or fabric)	Burnable	
Ball (for ball games)	Burnable	
Bamboo	Burnable	Ensure the thickness is within 10 cm and the length is within 60 cm.
Bamboo blind	Oversized	
Bamboo broom	Oversized	
Band-aid or plaster	Burnable	
Bandage	Burnable	Wrap used items in paper or similar materials
Basket (metal)	Non-burnable	
Basket wooden or plastic)	Burnable	
Bath additive box	Paper products	When it has a fragrance, dispose of it as [Burnable garbage]
Bath additive packaging	Plastic	
Bath towel	Burnable	
Bathtub lid	Oversized	
Battery	Hazardous waste	
Battery (excluding household appliance batteries)	Difficult to process	Cannot be processed by Ono town. Please take it to a specialized waste disposal facility.
Bed	Oversized	Remove the spring.
Bed mattress	Oversized	Remove the spring.
Beer bottle	Glass containers.	Rinse lightly. Caps go in the non-burnable garbage
Beer can	Can containers.	Rinse lightly
Belt	Burnable	
Bento container (e.g., from convenience stores)	Plastic	Rinse lightly to remove dirt.
Bicycle	Oversized	
Bike	Difficult to process	Cannot be processed by Ono town. Please take it to a specialized waste disposal facility.
Binder	Burnable	
Binoculars	Non-burnable	
Blade of the lawn mower	Non-burnable	Wrap the blade part with paper or similar material
Blanket (non-electric)	Burnable	Items that do not fit in designated bags are classified as oversized garbage
Block	Difficult to process	Cannot be processed by Ono town. Please take it to a specialized waste disposal facility.
Blood pressure monitor (using mercury)	Hazardous waste	
Blood pressure monitor.	Non-burnable	
Blu-ray disc	Burnable	
Blu-ray player	Non-burnable	
Blue sheet (tarp)	Burnable	Cut into pieces within 60 cm
Bolt	Non-burnable	
Books	Paper products	Bundle only magazines and other paper
Bookshelf	Oversized	
Boots	Burnable	
Boston bag	Burnable	Remove any metal parts.
Bottle opener (metal)	Non-burnable	
Bottles (e.g., beer bottles, sake bottles)	Glass containers.	Rinse lightly. Caps go in the non-burnable garbage
Bowling ball	Difficult to process	Cannot be processed by Ono town. Please take it to a specialized waste disposal facility.

Item Name	Type of Garbage	Application
Branch	Burnable	Cut to a length of 60 cm and a thickness of 10 cm or less, and place in the designated bag.
Brazier	Non-burnable	
Bread bag	Plastic	
Brick	Difficult to process	Cannot be processed by Ono town. Please take it to a specialized waste disposal facility.
Broom	Burnable	
Brush (handle made of wood or plastic)	Burnable	Metal items go to [Non-burnable garbage]
Brush pen	Burnable	
Brush pen case	Burnable	
Bucket (metal)	Non-burnable	
Bucket (wood or plastic)	Burnable	
Buddhist altar	Oversized	
Building blocks	Burnable	
Burlap sack	Burnable	
Business card	Paper products	Bundle together with magazines and other paper.
Business card holder	Burnable	Metal items go to [Non-burnable garbage]
Button (wooden or plastic)	Burnable	Metal items go to [Non-burnable garbage]
Button cell battery	Hazardous waste	
C		
Cable	Non-burnable	
Calculator	Non-burnable	Remove the batteries and dispose of them as hazardous waste.
Calendar	Paper products	Bundle together with magazines and other paper.
Camera	Non-burnable	Remove the batteries and dispose of them as hazardous waste.
Camera stand	Non-burnable	
Can box for sweets	Non-burnable	
Can opener	Non-burnable	
Candle	Burnable	
Candy box	Burnable	Bundle together with magazines and other paper.
Cane (metal)	Non-burnable	Wooden items should be disposed of as burnable garbage
Canned food / lid of canned food	Non-burnable	
Cans (beverage cans), aluminum cans, steel cans	Can	Cap go in the non-burnable garbage.
Cans (other than beverage cans)	Non-burnable	
Cap or lid (for bottles and cans)	Non-burnable	Items made of plastic should be sorted into the plastic waste bag.
Caps (lids of beverage containers)	Burnable	Metal items go to [Non-burnable garbage]
Car navigation (GPS)	Non-burnable	
Car parts (headlights, mufflers, etc.)	Difficult to process	Cannot be processed by Ono town. Please take it to a specialized waste disposal facility.
Car wash brush	Burnable	
Carbon paper	Burnable	
Cardboard	Paper products	Remove the battery and dispose of it as hazardous waste.
Carpet	Oversized	
Carry bag	Oversized garbage	

Item Name	Type of Garbage	Application
Cash card	Burnable	Make sure personal information is not identifiable.
Cassette tape	Burnable	
Cat litter	Burnable	
CD	Burnable	
CD case	Burnable	
CD player	Non-burnable	If it cannot fit in the designated bag, it will be classified as oversized garbage.
Ceiling light	Non-burnable	If it cannot fit in the designated bag, it will be classified as oversized garbage.
Cell phone	Non-burnable	Please also make use of the collection services provided by the seller
Ceramics (pottery)	Non-burnable	
Chain	Non-burnable	
Chainsaw	Difficult to process	Cannot be processed by Ono town. Please take it to a specialized waste disposal facility.
Oversized	Oversized	
Charcoal grill	Non-burnable	
Charger	Non-burnable	
Child car seat	Oversized garbage	
Cigarette box	Paper products	Bundle only magazines and other paper
Cigarette butts	Burnable	
Cigarette outer packaging	Plastic	
Circulator (Air Circulator)	Non-burnable	
Clay pot	Non-burnable	It belongs in the oversized garbage if it does not fit in the designated bag
Clay (Paper•Plastic)	Burnable	
Clear file	Burnable	
Clothes dryer	Specified kinds of home appliances	Specified kinds of home appliances (page 11)
Clothes drying pole	Oversized	The concrete foundation cannot be processed
Clothespins (plastic)	Burnable	Metal items go to [Non-burnable garbage]
Clothing	Burnable	
Clothing storage box	Oversized	
Coaster (made of wood or plastic)	Burnable	
Coaster (metal)	Non-burnable	
Coffee cup (ceramic or glass)	Non-burnable	
Coffee machine (Home Use)	Non-burnable	If it cannot fit in the designated bag, it will be classified as oversized garbage.
Color box	Oversized	
Colored pencil	Burnable	
Comb (hairbrush) excluding metal	Burnable	
Comb (metal)	Non-burnable	
Comic book	Paper products	Bundle together with magazines and other paper
Compass	Non-burnable	
Computer	Non-burnable	
Computer mouse	Non-burnable	Remove the batteries and place them in hazardous waste
Computer rack	Oversized	

Item Name	Type of Garbage	Application
Concrete Products / Fragments	Difficult to process	Cannot be processed by Ono town. Please take it to a specialized waste disposal facility.
Contact Lenses	Burnable	
Cooking oil	Burnable	Absorb it with cloth, newspapers, or similar materials.
Cooking paper	Burnable	
Cooking sake bottle	Glass containers.	Rinse lightly and place in the colored glass bottle
Cooler box	Burnable	If it cannot fit in the designated bag, it will be classified as oversized garbage.
Cooling fan (if it uses Freon)	Difficult to process	For Freon disposal, take it to a specialized facility.
Cooling pillow	Burnable	
Cord	Non-burnable	
Cord reel	Non-burnable	
Cork	Burnable	
Cork Board	Burnable	If it cannot fit in the designated bag, it will be classified as oversized garbage.
Corkscrew	Non-burnable	
Corner hanger (metal)	Non-burnable	
Corner hanger (wooden or plastic)	Burnable	
Cosmetic bottle	Non-burnable	
Cotton swabs	Burnable	
Cradle	Oversized	
Crayon	Burnable	
Credit card	Burnable	Ensure that personal information is not identifiable
Crib	Oversized	
Cup (ceramic or glass)	Non-burnable	
Cup (glass)	Non-burnable	
Cup (wood or plastic)	Burnable	
Cup (wooden or plastic)	Burnable	
Curtain	Burnable	
Curtain rail	Oversized	
Cushion	Burnable	If it cannot fit in the designated bag, it will be classified as oversized garbage.
Cushioning material (styrofoam)	Plastic	
Cutting board	Burnable	
D		
Dehumidifier (if using Freon)	Difficult to process	For Freon disposal, take it to a specialized facility.
Dehumidifier agent	Burnable	
Dentures	Burnable	
Deodorant (for odors)	Burnable	Use up the contents
Desiccant	Burnable	
Desk	Oversized	
Desktop printer	Non-burnable	Items that do not fit in designated bags are classified as oversized garbage
Detergent container	Plastic	Rinse lightly to remove dirt.
Diaper	Burnable	Flush waste down the toilet
Diaper cover	Burnable	
Diatomaceous earth (mats,	Non-burnable	

Item Name	Type of Garbage	Application
coasters, etc.)		
Dictionary (encyclopedia)	Paper products	Bundle only magazines and other paper
Digital camera	Non-burnable	
Digital scale (weight scale)	Non-burnable	Remove the battery and dispose of it as hazardous waste.
Digital thermometer	Non-burnable	Remove the batteries and dispose of them as hazardous waste.
Direct mail	Paper products	Bundle only magazines and other paper
Dish cabinet	Oversized	
Dishcloth	Burnable	
Display monitor	Non-burnable	Built-in tuners are classified as specified kinds of home appliances (Refer to page 11)
Disposable camera	Burnable	
Disposable chopstick paper sleeve	Paper products	Bundle together with magazines and other paper.。
Disposable chopsticks	Burnable	
Disposable hand warmer	Burnable	
Disposable heat pack	Burnable	
Dog house	Oversized	
Doll (fabric or plastic)	Burnable	
Doll case	Non-burnable	If it cannot fit in the designated bag, it will be classified as oversized garbage.
Door knob	Non-burnable	
Double-sided tape	Burnable	
Down comforter	Oversized	
Drawing paper	Paper products	Bundle together with magazines and other paper.
Dresser	Oversized	
Dressing glass	Non-burnable	
Dressing PET Bottle	Burnable	
Driver	Non-burnable	
Drum	Oversized	
Drum can	Difficult to process	Cannot be processed by Ono town. Please take it to a specialized waste disposal facility.
Dry cell	Hazardous waste	
Dry cleaning bag	Plastic	
Dryer	Non-burnable	
Duralumin case	Non-burnable	
Dust cloth (cleaning cloth)	Burnable	
Dustpan (wooden or plastic)	Burnable	Metal items go to [Non-burnable garbage]
DVD	Burnable	
DVD case	Burnable	
DVD player	Non-burnable	
E		
Ear cleaner	Burnable	Metal items go to [Non-burnable garbage]
Earphones	Non-burnable	
Ear ring	Non-burnable	
Edible oil container (plastic)	Burnable	
Egg carton	Plastic	
Electone	Oversized	
Electric blanket	Oversized	

Item Name	Type of Garbage	Application
Electric carpet	Oversized	
Electric cord	Non-burnable	
Electric fuel pump	Non-burnable	Remove the batteries and dispose of them as hazardous waste.
Electric heater	Non-burnable	Items that do not fit in designated bags are classified as oversized garbage
Electric kettle	Non-burnable	
Electric lawn mower	Oversized	Remove the battery and dispose of it as hazardous waste
Electric massager	Non-burnable	Batteries should be removed and disposed of as hazardous waste
Electric shaver (razor)	Non-burnable	Items with built-in batteries should be disposed of as hazardous waste.
Electric stand (lamp)	Non-burnable	
Electric stove	Non-burnable	
Electric toothbrush	Non-burnable	Batteries should be removed and disposed of as hazardous waste
Electric-assisted bicycle	Oversized	Batteries should be removed and disposed of as hazardous waste.
Electrical Outlet	Non-burnable	
Electronic cigarette / heated tobacco	Hazardous waste	
Electronic dictionary / electronic notebook	Non-burnable	
Electronic lighter	Hazardous waste	
Empty box	Paper products	Bundle together with other paper
Engine	Difficult to process	Cannot be processed by Ono town. Please take it to a specialized waste disposal facility.
Entrance mat (metal)	Non-burnable	If it cannot fit in the designated bag, it will be classified as oversized garbage.
Entrance mat (plastic)	Burnable	If it cannot fit in the designated bag, it will be classified as oversized garbage.
Envelope	Paper products	Bundle together with magazines and other paper.
Eraser	Burnable	
Extension cord	Non-burnable	
Exterior wall material	Difficult to process	Cannot be processed by Ono town. Please take it to a specialized waste disposal facility.
External hard disk drive	Non-burnable	
F		
Fabric	Burnable	
Fac heater	Oversized garbage	
Fallen leaves	Burnable	
Fan	Oversized	
Fancy case	Oversized	
Fax machine (desktop type)	Non-burnable	Items that do not fit in designated bags are classified as oversized garbage
Fertilizer	Difficult to process	Cannot be processed by Ono town. Please take it to a specialized waste disposal facility.
Fertilizer bag	Difficult to process	Cannot be processed by Ono town. Please take it to a specialized waste disposal facility.
Figurine (wood or plastic)	Burnable	

Item Name	Type of Garbage	Application
Film	Burnable	
Film case	Burnable	
Filter paper	Burnable	
Fire extinguisher	Difficult to process	Cannot be processed by Ono town. Please take it to a specialized waste disposal facility.
Fire tongs	Non-burnable	
Fireproof safe	Difficult to process	Cannot be processed by Ono town. Please take it to a specialized waste disposal facility.
Fireworks	Burnable	After use, soak in water
Fish bowl	Non-burnable	
Fishing reel	Non-burnable	
Fishing rod	Burnable	Reels and fishing hooks should be disposed of as non-burnable garbage.
Flashlight	Non-burnable	Remove the batteries and dispose of them as hazardous waste.
Float ring	Burnable	
Floor Chair	Oversized	
Floor cushion (zabuton)	Burnable	
Floor wax	Difficult to process	Cannot be processed by Ono town. Please take it to a specialized waste disposal facility.
Floppy disk	Burnable	
Flower holder	Non-burnable	
Flowers	Burnable	
Fluorescent lamp / fluorescent tube	Hazardous waste	Place it in the box it came in when sold
Flyer (leaflet)	Paper products	Bundle only newspapers and inserts with string or similar material.
Folding bed	Oversized	Remove the spring.
Food tray	Plastic	Rinse lightly to remove dirt.
Food waste	Burnable	Drain the moisture before disposing of it as [Burnable garbage]
Foot mat	Burnable	Items made of diatomaceous earth are considered non-burnable garbage.
Foot pedal sewing machine	Oversized	
Fork (farm tool, metal)	Oversized	
Fork (tableware, metal)	Non-burnable	
Fountain pen	Non-burnable	
Frame (metal)	Non-burnable	
Frame (wooden or plastic)	Burnable	
Freezer	Specified kinds of home appliances	Specified kinds of home appliances (Refer to page 11)
Freezer storage bag	Burnable	
Fresh flowers	Burnable	
Fruit net	Plastic	
Frying pan	Non-burnable	
Fuel	Difficult to process	Cannot be processed by Ono town. Please take it to a specialized waste disposal facility.
Fuel pump (made of plastic)	Burnable	
Furniture (such as dresser, cupboard, etc.)	Oversized	
Furoshiki (wrapping cloth)	Burnable	

Item Name	Type of Garbage	Application
Futon	Oversized	
Futon dryer	Non-burnable	Items that do not fit in designated bags are classified as oversized garbage
G		
Game console	Non-burnable	
Game software	Burnable	
Gas canister	Difficult to process	Cannot be processed by Ono town. Please take it to a specialized waste disposal facility.
Gas cartridge	Hazardous waste	Use up the contents. Do not make holes.
Gas stove	Non-burnable	If it cannot fit in the designated bag, it will be classified as oversized garbage.
Gasoline	Difficult to process	Cannot be processed by Ono town. Please take it to a specialized waste disposal facility.
Gauze	Burnable	
Generator	Difficult to process	Cannot be processed by Ono town. Please take it to a specialized waste disposal facility.
Geta box	Oversized	
Glass	Non-burnable	
Glass (glass products like cups)	Non-burnable	
Glasses	Non-burnable	
Glasses case	Burnable	Metal items go to [Non-burnable garbage]
Globe	Burnable	Items that do not fit in designated bags are classified as oversized garbage
Glove	Burnable	
Gloves	Burnable	
Glow lamp	Non-burnable	
Golf Bag	Oversized	
Golf Ball	Burnable	
Golf Club	Non-burnable	
Grass	Burnable	Remove the soil
Grass cutter	Oversized	
Guitar	Oversized	
Guitar case	Oversized	
Gypsum / Gypsum board	Difficult to process	Cannot be processed by Ono town. Please take it to a specialized waste disposal facility.
H		
Hair pin	Non-burnable	
Hair spray	Hazardous waste	Use up the contents. Do not punch holes
Hair wax	Burnable	
Hairpin	Non-burnable	
Hammer	Non-burnable	
Handbag	Burnable	
Handcart	Oversized	
Handkerchief	Burnable	
Hanging scroll	Burnable	
Hanko	Burnable	Made of metal is 【Non-burnable garbage】
Hat	Burnable	
Headphones	Non-burnable	
Heat-resistant glass baby bottle	Non-burnable	
Heat-resistant tableware	Non-burnable	
Heated tobacco device (main	Hazardous waste	

Item Name	Type of Garbage	Application
unit)		
Heater	Oversized	
Heating oil	Difficult to process	Cannot be processed by Ono town. Please take it to a specialized waste disposal facility.
Hoe	Oversized	
Hole punch	Non-burnable	
Home boiler	Oversized	
Hose	Burnable	Cut to a length of 60 cm or less.
Hot carpet	Oversized	
Hot plate	Non-burnable	Items that do not fit in the designated bag are considered oversized garbage.
Humidifier	Non-burnable	If it cannot fit in the designated bag, it will be classified as oversized garbage.
I		
Ice pack	Burnable	
Ice pick	Non-burnable	Wrap the tip of the needle in paper or similar material
Ice pillow	Burnable	
Ice skates	Non-burnable	
IH cooking heater	Oversized	
Illumination	Non-burnable	Remove batteries and place them in the hazardous waste
Illustrated dictionary (encyclopedia)	Paper products	Bundle only magazines and other paper
Incense sticks	Burnable	
Ink cartridge	Burnable	Please make use of the collection boxes at retailers and similar locations.
Ink ribbon	Burnable	
Inkstone	Non-burnable	
Insect cage	Burnable	Metal items go to [Non-burnable garbage]
Insecticide	Hazardous waste	Use up the contents.
Insert advertisement	Paper products	Tie it together with string along with the newspaper.
Instant camera	Burnable	
Instant noodle container	Plastic	Rinse lightly to remove dirt.
Instant ramen cup	Plastic	Rinse lightly to remove dirt
Iron	Non-burnable	
Ironing board	Non-burnable	Items that do not fit in designated bags are classified as oversized garbage
J		
Japanese fan	Burnable	
Japanese paper	Paper products	Bundle together with magazines and other paper.
Japanese school backpack	Burnable	
Jar (bottle)	Non-burnable	
Jelly container	Plastic	Rinse lightly to remove dirt.
Juicer	Non-burnable	
K		
Karaoke equipment	Oversized	
Karaoke monitor	Oversized	Devices with built-in receivers cannot be accepted. Please contact a specialized waste disposal service.
Ketchup container	Burnable	
Kettle	Non-burnable	

Item Name	Type of Garbage	Application
Key	Non-burnable	
Key holder (metal)	Non-burnable	Wooden and plastic items are considered burnable garbage.
Keyboard (musical instrument)	Oversized	
Keyboard harmonica.	Burnable	
Kick board	Oversized	
Kimono	Burnable	
Kitchen knife	Non-burnable	Wrap the blade part with paper or similar material
Kitchen paper	Burnable	
Kitchen scale	Non-burnable	
Knife	Non-burnable	Wrap the blade part with paper or similar material
Knitting (Plastic/Wooden)	Burnable	
Knitting (made of metal)	Non-burnable	
Kokeshi doll	Burnable	
Kotatsu and kotatsu table	Oversized	
Kotatsu Futon (Heated Table Blanket)	Oversized	
L		
Label	Plastic	
Lamp	Non-burnable	
Laptop	Non-burnable	
LCD TV	Specified kinds of home appliances	Specified kinds of home appliances (page 11)
Leather goods	Burnable	
Leather products	Burnable	
LED bulb	Non-burnable	
Leisure sheet (groundsheet/mat)	Burnable	Cut to a size within 60 cm on each side
Light bulbs	Hazardous waste	Handle with care to avoid breaking.
Lighter	Hazardous waste	Use up the contents
Lighting fixtures	Non-burnable	If it cannot fit in the designated bag, it will be classified as oversized garbage.
Lipstick (with a metal case)	Non-burnable	
Lipstick (with a plastic case)	Burnable	
Lock	Non-burnable	
Locker	Oversized	
Low table (traditional Japanese floor table)	Oversized	
Luggage carrier	Oversized	
M		
Machete	Non-burnable	Wrap the blade part with paper or similar material
Machine oil	Difficult to process	Cannot be processed by Ono town. Please take it to a specialized waste disposal facility.
Magazine	Paper products	Bundle only magazines and other paper
Magnet	Non-burnable	
Magnifying glass	Non-burnable	
Makeup vanity	Oversized	
Mallet	Difficult to process	Items exceeding 10 cm in thickness should be handled by a specialized waste disposal facility.
Mandarin orange net	Plastic	
Manual lawn mower	Oversized	

Item Name	Type of Garbage	Application
Massage chair	Oversized	
Massager	Oversized	
Mat	Burnable	If it cannot fit in the designated bag, it will be classified as oversized garbage.
Matchsticks	Burnable	
Mattress	Oversized	Items with springs cannot be processed by Ono town.
Mayonnaise container	Burnable	
MD	Burnable	
MD player	Non-burnable	Battery is 【Hazardous waste】
Measuring cup (made of plastic)	Burnable	
Measuring cup (metal)	Non-burnable	
Measuring tape	Burnable	
Mechanical pencil	Burnable	Metal items go to [Non-burnable garbage]
Medical waste (oxygen tanks or needles)	Difficult to process	It cannot be processed in Ono town. Please consult a medical facility.
Medicine (tablets, capsules, etc.)	Burnable	
Megaphone	Burnable	
Mercury thermometer	Hazardous waste	
Mercury thermometer	Hazardous waste	
Metal accessories	Non-burnable	
Metal bat	Non-burnable	
Metal bucket	Non-burnable	
Metal grater	Non-burnable	Plastic items are considered burnable garbage.
Metal hook	Non-burnable	
Metal hose reel	Non-burnable	
Metal hot water bottle	Non-burnable	Plastic items are considered burnable garbage.
Metal ladle	Non-burnable	
Metal lid for a one-sho bottle	Non-burnable	
Metal net/mesh	Non-burnable	
Metal or glass magic ink	Non-burnable	
Metal spatula	Non-burnable	Plastic items are considered burnable garbage.
Metal spoon	Non-burnable	Wood/ Plastic items are considered burnable garbage.
Metal water bottle	Non-burnable	
Microphone	Non-burnable	Remove the batteries and dispose of them as hazardous waste.
Microscope	Non-burnable	
Microwave	Specified kinds of home appliances	Specified kinds of home appliances (Refer to page 11)
Milk can	Non-burnable	
Milk carton	Paper products	Cut open and tie only the paper cartons together with string.
Mini light bulb	Non-burnable	
Mirin bottle	Glass containers.	Rinse lightly and place in the colored glass bottle
Mirin PET bottle	PET Bottle	Rinse lightly
Mixer	Non-burnable	
Mobile battery / Power bank	Hazardous waste	
Mochi maker	Oversized	
Monthly magazine	Paper products	Bundle only magazines and other paper
Mop	Oversized	

Item Name	Type of Garbage	Application
Mortar	Difficult to process	Cannot be processed in Ono town. Please contact a specialized service
Mortar and pestle	Non-burnable	
Mosquito coil	Burnable	
Motorcycle	Difficult to process	Cannot be processed by Ono town. Please take it to a specialized waste disposal facility.
Motorized bicycle	Difficult to process	Cannot be processed by Ono town. Please take it to a specialized waste disposal facility.
Muffler (car or motorcycle part)	Difficult to process	Cannot be processed by Ono town. Please take it to a specialized waste disposal facility.
Muffler (for warmth)	Burnable	
Mug (ceramic or metal)	Non-burnable	Plastic items are considered burnable garbage.
Music box	Non-burnable	
N		
Nail	Non-burnable	
Nail clipper	Non-burnable	
Nail lacquer	Burnable	
Nail polish bottle	Non-burnable	
Nameplate (Plastic)	Burnable	Metal items go to [Non-burnable garbage]
Natto container	Burnable	
Needle	Non-burnable	Wrap in paper or similar material to make it safe.
Net (fruit net)	Plastic	Remove dirt.
Net (Plastic/Wooden)	Burnable	
Network hub	Non-burnable	
New Year card	Paper products	Bundle together with magazines and other paper.
Newspaper	Paper products	Tie only newspapers and advertisements with string
Noodle soup bottle	Glass containers.	Rinse lightly and place in the colored glass bottle
Notebook	Paper products	
Notebook (planner)	Burnable	
Notepad	Paper products	Bundle together with magazines and other paper.
Nut	Non-burnable	
Nylon tape	Burnable	
O		
Office equipment (printer)	Difficult to process	Cannot be processed by Ono town. Please take it to a specialized waste disposal facility.
Oil (machine oil)	Difficult to process	Cannot be processed by Ono town. Please take it to a specialized waste disposal facility.
Oil can	Non-burnable	Use up the contents
oil heater	Oversized	
Oil paper	Burnable	
Oil-based pen	Burnable	Metal items go to [Non-burnable garbage]
One-sho bottle	Glass bottles	Sort by color and place in the designated bag
Origami	Paper products	Bundle only magazines and other paper
Oven toaster	Non-burnable	If it cannot fit in the designated bag, it will be classified as oversized garbage.
P		
Pachinko or pachislot machine	Difficult to process	Cannot be processed by Ono town. Please take it to a specialized waste disposal facility.
Pacifier	Burnable	
Packing Paper	Paper products	Bundle only magazines and other paper

Item Name	Type of Garbage	Application
Pain relief patch	Burnable	
Pain relief patch box	Paper products	Bundle only magazines and other paper
Paint	Difficult to process	Cannot be processed by Ono town. Please take it to a specialized waste disposal facility.
Paint	Difficult to process	Cannot be processed by Ono town. Please take it to a specialized waste disposal facility.
Paint can	Non-burnable	Use up the contents
Paint container (Plastic)	Burnable	Use up the contents
Paint container (Metal)	Non-burnable	Use up the contents
Pamphlet/	Paper products	Bundle together with magazines and other paper.
Pants	Burnable	
Paper bag	Paper products	Remove the handles and tie only the magazines and other paper items together.
Paper box for sweets	Paper products	Bundle only magazines and other paper
Paper clip	Non-burnable	
Paper cup	Burnable	
Paper diaper	Burnable	Flush waste down the toilet
Paper ice cream container	Burnable	
Paper pack	Paper products	Open only the paper pack and secure it with a string.
Paper plate	Burnable	
Paper towel	Burnable	
Paper waste	Burnable	
Paperweight	Non-burnable	
Peeler	Non-burnable	
Pen	Burnable	Metal items go to [Non-burnable garbage]
Pencil	Burnable	
Pencil sharpener	Non-burnable	
Perfume bottle	Non-burnable	Use up the contents
Personal seal	Burnable	Metal or made by rocks items go to [Non-burnable garbage]
Pesticide	Difficult to process	Cannot be processed by Ono town. Please take it to a specialized waste disposal facility.
Pesticide container	Difficult to process	Cannot be processed by Ono town. Please take it to a specialized waste disposal facility.
PET Bottle (for beverages)	PET Bottle	Rinse lightly and separate the cap and label
PET Bottle cap	Plastic	
PET Bottle label	Plastic	
Pet harness	Burnable	
Pet leash	Burnable	
Pet toilet sand	Burnable	Put it in a bag to prevent scattering.
Phone book	Paper products	Bundle together with magazines and other paper.
Photograph	Burnable	
Piano	Difficult to process	Cannot be processed by Ono town. Please take it to a specialized waste disposal facility.
Pickling stone	Difficult to process	Cannot be processed by Ono town. Please take it to a specialized waste disposal facility.
Picnic table	Oversized	
Pillow	Burnable	
Pillow cover	Burnable	
Pipe bed	Oversized	

Item Name	Type of Garbage	Application
Plant support stake (metal and plastic)	Oversized	
Plastic bag	Plastic	
Plastic ballpoint pen	Burnable	Metal items go to [Non-burnable garbage]
Plastic bento box	Burnable	Metal items go to Non-burnable garbage
Plastic bucket	Burnable	
Plastic Chinese soup spoon	Burnable	Metal items go to [Non-burnable garbage]
Plastic file	Burnable	
Plastic helmet	Burnable	
Plastic ice cream container	Plastic	
Plastic ladle	Burnable	
Plastic lid for a one-sho bottle	Burnable	
Plastic model	Burnable	
Plastic planter	Burnable	Ceramic items go to 【Non-burnable garbage】
Plastic shopping bag	Plastic	
Plastic wrap (for packaging)	Plastic	
Plastic wrap box	Paper products	Group together with magazines and other paper
Plastic wrap core	Paper products	Group together with magazines and other paper
Plate (ceramic)	Non-burnable	
Plate (wood or plastic)	Burnable	
Play carrrds	Burnable	
Player (for various media playback/recording)	Non-burnable	
Pliers	Non-burnable	
Pocket-sized book	Paper products	Bundle only magazines and other paper
Poly tank	Burnable	empty the contents
Pool (for children)	Burnable	Items that do not fit in designated bags are classified as oversized garbage
Portable safe	Non-burnable	
Postcard	Paper products	Bundle together with magazines and other paper.
Pot	Non-burnable	
Potted plant	Burnable	Cut to a length of 60 cm and a thickness of 10 cm or less, and place in the designated bag.
Potted plants (wood and plastic)	Burnable	It belongs in the oversized garbage if it does not fit in the designated bag
Pottery	Non-burnable	
Potty	Burnable	If it cannot fit in the designated bag, it will be classified as oversized garbage.
Powdered Milk Can	Non-burnable	
Power adapter	Non-burnable	
Power tools	Non-burnable	Batteries should be removed and disposed of as hazardous waste
Pressure cooker	Non-burnable	
Pressure-sealed postcard	Burnable	
Printer (for home use)	Oversized	Commercial equipment cannot be accepted in Ono tow
Propane gas cylinder	Difficult to process	Cannot be processed by Ono town. Please take it to a specialized waste disposal facility.
Pudding container	Plastic	Rinse lightly to remove dirt.
Pumice stone (for bath use only)	Non-burnable	
Pushpin	Non-burnable	

Item Name	Type of Garbage	Application
R		
Racket	Burnable	Metal items go to [Non-burnable garbage]
Radio	Non-burnable	Batteries should be removed and disposed of as hazardous waste.
Radio cassette player	Non-burnable	Batteries should be removed and disposed of as hazardous waste.
Raincoat	Burnable	
Razor	Non-burnable	Wrap the blade part with paper or similar material.
RC (radio-controlled) motorized toy	Non-burnable	Batteries should be removed and disposed of as hazardous waste.
Reading glasses	Non-burnable	
Receipt	Burnable	
Reception chair (without springs)	Oversized	
Rechargeable battery	Hazardous waste	
Record disc	Burnable	
Record player	Non-burnable	
Reed screen	Oversized	
Refrigerator	Specified kinds of home appliances	Specified kinds of home appliances (Refer to page 11)
Refrigerator deodorizer	Burnable	
Remote control	Non-burnable	Remove the batteries and dispose of them as hazardous waste.
Ribbon	Burnable	
Rice Bag (Paper)	Paper products	Bundle only magazines and other paper
Rice bowl (ceramic)	Non-burnable	Wooden • Plastic items are considered burnable garbage.
Rice cooker	Non-burnable	
Rice cooker pot	Non-burnable	
Rice Storage Container (Ricer)	Oversized	
Roller skates	Non-burnable	
Rope	Burnable	
Router (communication device)	Non-burnable	
Rubber band	Burnable	
Rubber band box	Paper products	Bundle together with magazines and other paper.
Rubber Boots	Burnable	
Rubber Gloves	Burnable	
Ruler	Burnable	Metal items go to [Non-burnable garbage]
Ruler (metal)	Non-burnable	
Ruler (wooden/plastic)	Burnable	
S		
Safety pin	Non-burnable	
Safety shoes	Burnable	
Sand	Difficult to process	Cannot be processed by Ono town. Please take it to a specialized waste disposal facility.
Sandals	Burnable	
Sanitary products (menstrual products)	Burnable	
Sauce bottle	Burnable	
Saw	Non-burnable	Wrap the blade part with paper or similar material
Scale (weighing scale)	Non-burnable	

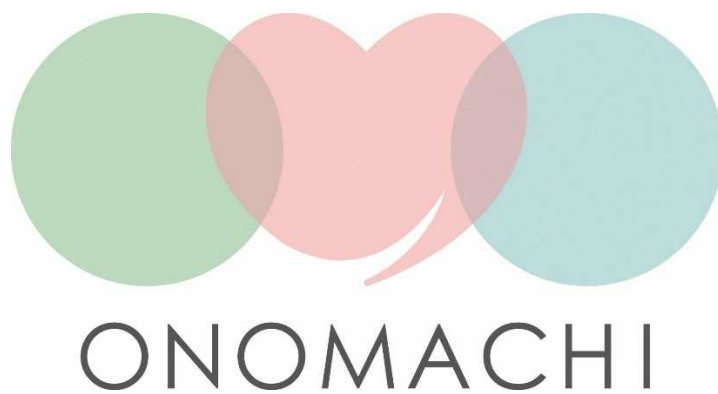
Item Name	Type of Garbage	Application
Scissors	Non-burnable	Wrap the blade part with paper or similar material
Scoop	Oversized	
Scooter	Difficult to process	Cannot be processed by Ono town. Please take it to a specialized waste disposal facility.
Screen door	Oversized garbage	
Screw	Non-burnable	
Scrub brush	Burnable	
Seedling raising box	Difficult to process	Cannot be processed by Ono town. Please take it to a specialized waste disposal facility.
Sewing	Non-burnable	Items that do not fit in designated bags are classified as oversized garbage
Shampoo bottle	Burnable	Use up the contents
Shampoo pump	Burnable	
Shampoo refill pouch	Plastic	Rinse lightly to remove dirt.
Sharp tools (e.g., blades, knives)	Non-burnable	Wrap the blade part with paper or similar material
Sheet	Burnable	
Shell	Burnable	
Shinto altar	Burnable	If it does not fit in the designated bag, it is considered oversized garbage.
Shoe bag	Burnable	
Shoe shining kit	Burnable	Use up the contents. Metal items go to [Non-burnable garbage]
Shoehorn (made of wood and plastic)	Burnable	Metal items go to [Non-burnable garbage]
Shoes	Burnable	
Shoji door (door with paper panels)	Oversized	
Showcase (excluding those with Freon)	Oversized	Only household items are accepted for drop-off.
Shredded paper	Paper products	Place it in a transparent bag.
Sickle	Non-burnable	Wrap the blade part with paper or similar material
Side dish container	Plastic	Rinse lightly to remove dirt.
Sideboard	Oversized	
Sieve (metal)	Non-burnable	
Sieve (plastic)	Burnable	
Sign pen	Burnable	
Silver walker (hand-pushed cart for elderly)	Oversized	
Skateboard	Oversized	
Ski boots	Non-burnable	
Ski poles	Oversized	
Skis	Oversized	
Sled	Oversized	
Sleeping Bag	Burnable	
Slipper rack (metal)	Non-burnable	If it cannot fit in the designated bag, it will be classified as oversized garbage.
Slipper rack (wooden/plastic)	Burnable	If it cannot fit in the designated bag, it will be classified as oversized garbage.
Slippers	Burnable	
Sludge / Waste	Difficult to process	Cannot be processed by Ono town. Please take it to a specialized waste disposal facility.

Item Name	Type of Garbage	Application
Smart phone	Non-burnable	Please also use the collection service of your telecommunications provider.
Smoke flare	Hazardous waste	
Snow shovel	Oversized	
Snowboard	Oversized	
Soap	Burnable	
Soap paper box	Paper products	Bundle together with magazines and other paper.
Soccer ball	Burnable	
Socks	Burnable	
Sofa (with springs)	Oversized	Remove the spring.
Soy sauce PET bottle	PET bottle	Rinse lightly to remove dirt.
Speaker	Oversized	
Spike shoes (track shoes)	Burnable	Remove the metal parts and dispose of them as non-burnable waste.
Sponge	Burnable	
Spray can	Hazardous waste	Use up the contents. Do not punch holes
Stainless steel or glass pot	Non-burnable	
Stand (TV stand, telephone stand, etc.)	Oversized	
Stapler	Non-burnable	
Steamer	Non-burnable	Items that do not fit in designated bags are classified as oversized garbage
Steel desk	Oversized	
Stepladder	Oversized	
Stereo (stereo system)	Oversized	
Stereo System (for Music)	Oversized	
Sticky tape	Burnable	
Stockings	Burnable	
Stone products	Difficult to process	It cannot be processed in Ono town. Please contact a specialized service
Stone/ rock	Difficult to process	It cannot be processed in Ono town. Please contact a specialized service
Stove	Oversized	Empty the kerosene
Straw	Burnable	
Straw mat	Burnable	Items that do not fit in designated bags are classified as oversized garbage
Stroller	Oversized	
Study desk	Oversized	
Stuffed toy	Burnable	
Styrofoam	Plastic	Rinse lightly to remove dirt.
Suitcase	Oversized	
Sunglass (metal)	Non-burnable	
Sunglass (Plastic)	Burnable	
Sweets bag	Plastic	
T		
Table	Oversized	
Tablet device	Non-burnable	
Tabletop IH stove	Non-burnable	
Tableware (ceramic, pottery)	Non-burnable	
Tableware (wood, plastic)	Burnable	
Tape	Burnable	

Item Name	Type of Garbage	Application
Tape recorder	Non-burnable	
Tatami	Oversized	
Tatami mat	Burnable	If it cannot fit in the designated bag, it will be classified as oversized garbage.
Taxidermy	Burnable	Depending on the type, some items cannot be processed in Ono town.
Teapot	Non-burnable	
Telephone	Non-burnable	
Telephone card	Burnable	
Telescope	Oversized	
Telescope	Non-burnable	
Television	Specified kinds of home appliances	Specified kinds of home appliances (Refer to page 11)
Tempura oil	Burnable	Solidify it or soak it in paper or similar materials.
Tennis ball	Burnable	
Text book	Paper products	Bundle only magazines and other paper
Thermal paper (receipts, etc.)	Burnable	
Thermoelectric cooler/warmer	Specified kinds of home appliances	Specified kinds of home appliances (Refer to page 11)
Thermometer	Non-burnable	Items containing mercury are classified as hazardous waste.
Thermometer (for water)	Non-burnable	
Thermos	Non-burnable	
Thick paper/cardboard	Paper products	Bundle together with magazines and other paper.
Thread (lint)	Burnable	
Tie	Burnable	
Tile	Difficult to process	Cannot be processed by Ono town. Please take it to a specialized waste disposal facility.
Tire	Difficult to process	Cannot be processed by Ono town. Please take it to a specialized waste disposal facility.
Tire wheel	Difficult to process	Cannot be processed by Ono town. Please take it to a specialized waste disposal facility.
Tissue box	Paper products	Bundle together with magazines and other paper.
Tissue box outer film	Plastic	
Tissue paper	Burnable	
Toaster	Non-burnable	
Tofu container	Plastic	Rinse lightly to remove dirt.
Toilet cleaner bottle	Plastic	Rinse lightly to remove dirt.
Toilet paper roll core	Paper products	Bundle together with magazines and other paper.
Toner	Burnable	
Toolbox (metal)	Non-burnable	
Toolbox (Plastic)	Burnable	
Tools	Non-burnable	
Toothbrush	Burnable	
Toothpaste tube	Burnable	
Towel	Burnable	
Toys (metal)	Non-burnable	Remove the batteries and dispose of them as hazardous waste.
Toys (wood or plastic)	Burnable	
Trash Bin (metal)	Non-burnable	
Trash Bin (Wood or Plastic)	Burnable	

Item Name	Type of Garbage	Application
Tray	Plastic	Rinse lightly to remove dirt.
Tray (wood or plastic)	Burnable	
Treadmill	Oversized	
Tree branches	Burnable	Cut to a length of 60 cm and a thickness of 10 cm or less, and place in the designated bag.
Tricycle	Oversized	
Tripod	Oversized	
Trophy	Non-burnable	Plastic items are considered burnable garbage.
Tweezers	Non-burnable	
Typewriter	Non-burnable	
U		
Umbrella	Non-burnable	
Umbrella stand (ceramic or metal)	Non-burnable	If it cannot fit in the designated bag, it will be classified as oversized garbage.
Umbrella stand (wooden or plastic)	Burnable	If it cannot fit in the designated bag, it will be classified as oversized garbage.
Unicycle (play equipment)	Oversized	
USB	Non-burnable	
Used oil container	Burnable	
Utility knife	Non-burnable	Wrap the blade part with paper or similar material
V		
Vacuum	Oversized	Remove the battery and dispose of it as hazardous waste.
Vase (metal or ceramic)	Non-burnable	
Vase (wooden or plastic)	Burnable	
Vegetable scraps	Burnable	Drain excess water before disposing of it as burnable garbage
Ventilation fan	Non-burnable	If it cannot fit in the designated bag, it will be classified as oversized garbage
Video camera	Non-burnable	
Video player	Non-burnable	
Video tape	Burnable	
Vinegar PET bottle	PET Bottle	Rinse lightly and remove the label
Vinyl	Plastic	Items not intended for packaging are classified as [Burnable garbage]
Vinyl bag	Plastic	
Vinyl gloves	Burnable	
Vinyl hose	Burnable	Cut to a length of 60 cm or less.
Vinyl string	Burnable	
Vinyl tape	Burnable	
Vinyl-coated paper	Burnable	
W		
Walker	Oversized	
Wallet	Oversized	
Wardrobe	Oversized	
Wash basin (metal)	Non-burnable	Items that do not fit in designated bags are classified as oversized garbage
Wash basin (plastic)	Burnable	Metal items go to [Non-burnable garbage]
Wash basin (wooden or plastic)	Burnable	Items that do not fit in designated bags are classified as oversized garbage

Item Name	Type of Garbage	Application
Washing machine	Specified kinds of home appliances	Specified kinds of home appliances (Refer to page 11)
Waste oil cooking	Burnable	Solidify it or soak it up with newspaper or similar materials
Watch	Non-burnable	Remove the batteries and dispose of them as hazardous waste.
Water pillow	Burnable	
Water purifier	Non-burnable	If it cannot fit in the designated bag, it will be classified as oversized garbage.
Watering can (metal)	Non-burnable	
Watering can (plastic)	Burnable	
Wax can	Non-burnable	Use up the contents
Weekly magazine	Paper products	Bundle only magazines and other paper
Wet tissue	Burnable	
Wet towel	Burnable	
Wheelbarrow (manual push type)	Oversized	
Wheelchair	Oversized	
Whisk	Non-burnable	(Including electric devices)
Wig	Burnable	
Window glass	Non-burnable	Wrap in paper or similar materials
Windowed envelope	Burnable	
Wipes	Burnable	
Wire	Non-burnable	
Wire hanger	Non-burnable	Plastic items are considered burnable garbage.
Wire mesh	Non-burnable	If it cannot fit in the designated bag, it will be classified as oversized garbage.
Wire rope	Non-burnable	
Wireless earphones	Non-burnable	Remove the batteries and dispose of them as hazardous waste
Wireless headphones	Non-burnable	Remove the batteries and dispose of them as hazardous waste
Wireless speaker	Non-burnable	Remove the batteries and dispose of them as hazardous waste
Wood shavings	Burnable	
Wooden bat	Burnable	
Wooden bookend	Burnable	Metal items go to [Non-burnable garbage]
Wooden clogs	Burnable	
Wooden/plastic accessories	Burnable	
Wool yarn	Burnable	
Word processor	Non-burnable	If it cannot fit in the designated bag, it will be classified as oversized garbage.
Work gloves	Burnable	
Wrapping paper	Paper products	Bundle together only magazines and other paper.
Z		
Zori (Japanese sandals)	Burnable	



Contact information

Ono Town Hall, Community Life Division

Address: 〒963-3492

92 Tatemawari, Ononiimachi, Ono, Tamura District

Phone Number: 0247-72-6933

FAX: 0247-72-3121

Update 1, Feb, 2025